



LNB

C-BAND EXT. REF.

3000X-2

TYPICAL SPECIFICATIONS

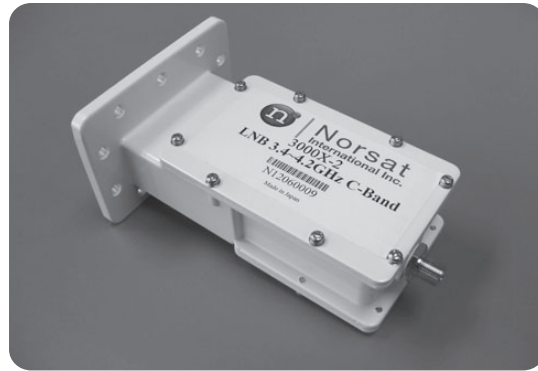
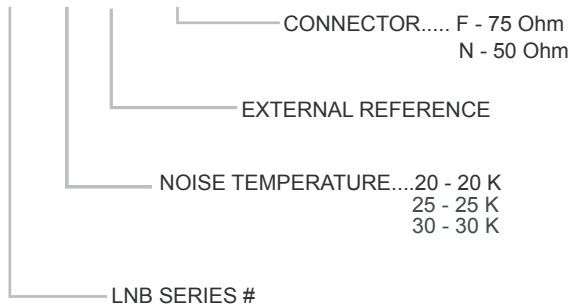
Noise temperature	20K to 30K depending on model number
L.O. stability	Phase Locked to External Reference
Phase noise (SSB)	-75 dBc/Hz at 1kHz -85 dBc/Hz at 10kHz -95 dBc/Hz at 100kHz
Input VSWR	2.3 : 1
Output VSWR	2.0 : 1

FREQUENCY BANDS AVAILABLE

Input frequency (GHz)	3.40 to 4.20
L.O. frequency (GHz)	5.15
Output frequency (MHz)	950 to 1750

HOW TO ORDER C-BAND 3000X-2

3020X-2N



Conversion gain	62 dB
Output P1dB	5 dBm
Power requirements	+12 to +24 V supplied through center conductor of IF cable
Current drain	300 mA
Input Waveguide	CPR229G
Dimensions	144 (L) x 66 (W) x 39 (H) mm (5.6 x 2.6 x 1.5 in)
Weight	580g / 18 oz
Ext Ref Frequency	10 MHz (sine-wave) -10 to 0 dBm
Temperature Range	-40°C to +60°C

MECHANICAL DIAGRAM

